



workTM

ideas

THE LATEST
IN BATHROOM
INSPIRATION

robertson
design.ideasTM

ROBERTSON**DESIGN**IDEAS.CO.NZ

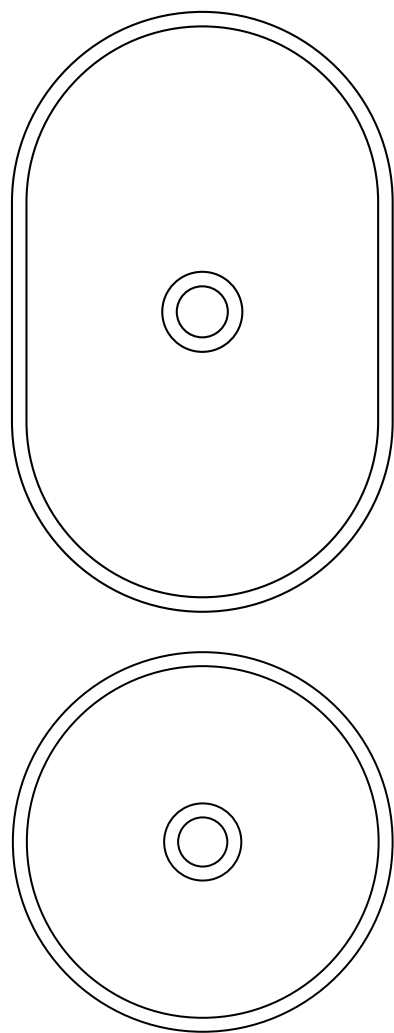
Cover Feature:
KOS RISE/BEAM

SPRING
EDITION
2021



R I S E





The intersection of forms generating functions characterises the style and work of Italian studio Zaven, in an idiom that feeds on the dialogue between the two-dimensional and the three-dimensional. In the Rise basin collection, a flat element crosses through a cylindrical volume, attempting to obtain the greatest possible number of results with a simple intersection of parts. The matrix is a rectangular deck integrating the basin, available in oval and round versions. A few simple cuts of this basic element make it possible to obtain distinctive designs and formal expressions, permitting its use in a variety of situations: as a single counter with a built-in basin, combined with a console; as a semi built-in or sit-on basin. In the console and semi built-in versions, the basin seems to emerge out of the counter, as if floating on top of it, evoking the gentle motion of water and creating pleasing ergonomics. While in the sit-on version, the memory of the countertop is preserved in the decorative moulding. The Rise collection is a synthesis of bold formal research with strategic industrial design aimed at optimising the production process while also permitting custom-made solutions.



reddot award

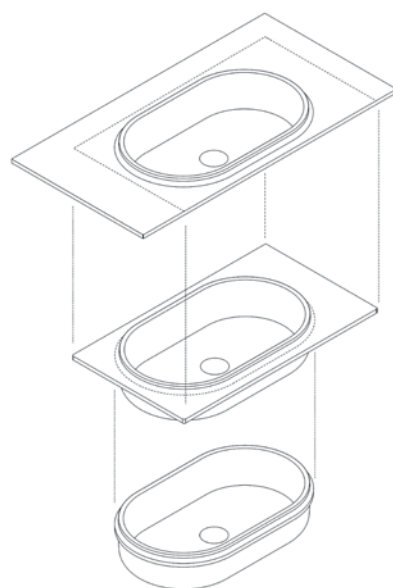
CATEGORY:
PRODUCT DESIGN

"Rise has been recognised thanks to its excellent, high quality design, chosen among hundreds of other proposals from more than 60 countries around the world by the prestigious international jury."

KOS

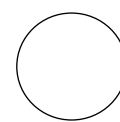
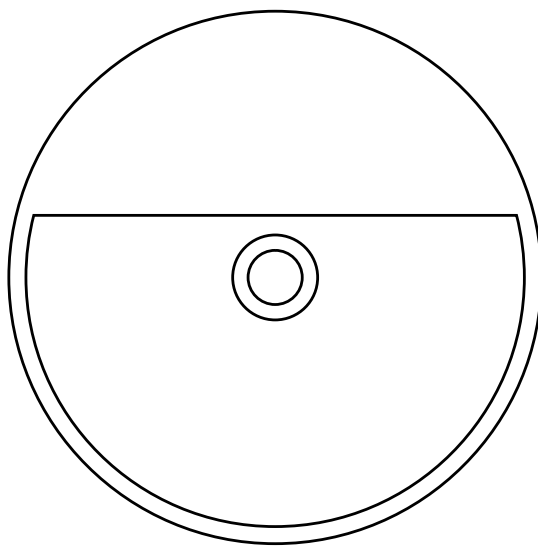


ITALIAN
DESIGN

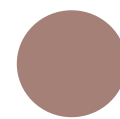




B E A M



WHITE



TAUPE



TERRACOTTA

The Beam project curiously combines archetypes of product design and architecture, in a contemporary idiom redefining the idea of the bathroom. The collection includes a sit-on washbasin made of Biobased Cristalplant®, available in 3 different colours. Beam is designed by New York studio Visibility, known for the ability and originality it brings to forming objects for ordinary everyday life, filling the living space. In the design of the washbasin, Visibility evokes the image of a bowl or basin: ancestors of today's washbasins recalling simple acts associated with nourishment and self-care, inspiring Beam's simple, familiar shape with an attractive, playful look.



reddot award

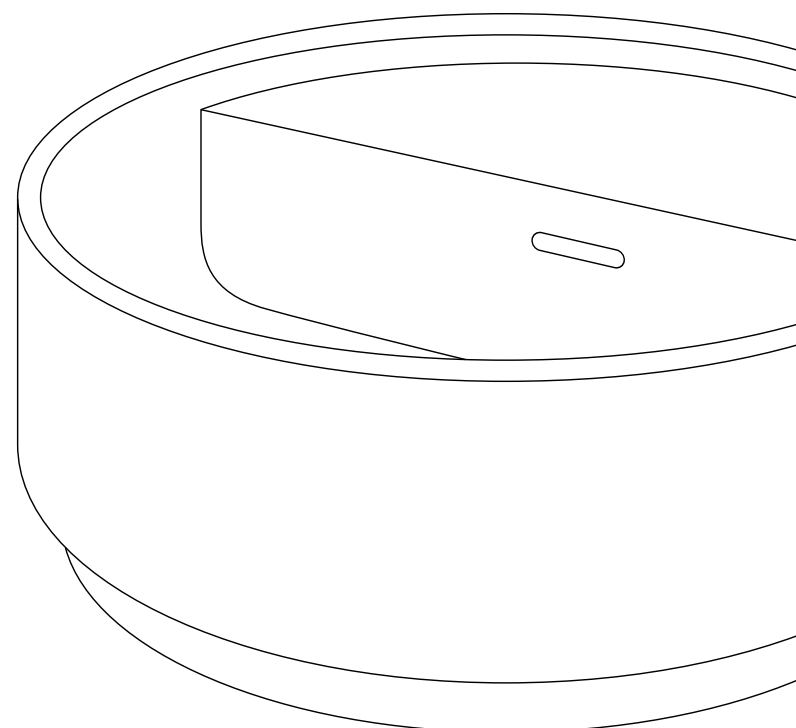
CATEGORY:
PRODUCT DESIGN
BEST OF THE BEST

"The Beam collection was named Red Dot: Best of the Best, the highest recognition of the contest, reserved for the most innovative product in its category."

KOS



ITALIAN
DESIGN



ARCHITECT
CRAIG SOUTH

INTERIOR DESIGNER
KYLA DAVIES

PHOTOGRAPHER
STEPHEN GOODENOUGH

CONCRETE COPPER HOME



WITH A BEAUTIFUL OUTLOOK TOWARDS THE STREAM IN SUBURBAN CHRISTCHURCH, THIS HOME ENJOYS A NATURAL MATERIAL PALETTE OF CONCRETE, COPPER AND TIMBER. LINEAL CONCRETE FORMS ARE STAGGERED ALONG THE SITE GIVING OCCUPANTS ACCESS TO SUN THROUGHOUT THE DAY, HELD TOGETHER BY THE SCULPTURAL ROOF. THE COPPER RAISES FROM THE GROUND AT THE ENTRY IN THE WEST STRETCHING UP OVER THE LIVING SPACES TO ENCAPSULATE THE FIRST FLOOR SLEEPING QUARTERS. THE COPPER FORM IS EXTRUDED FRONT TO BACK, EXPOSING AN UNDERCROFT OF RICH TIMBER.



FEATURED PRODUCT



ZUCCHETTI
**PAN WALL MOUNTED
BASIN MIXER**
BRUSHED NICKEL:
ZP6032.C3



ZUCCHETTI
**PAN KITCHEN
MIXER**
BRUSHED NICKEL:
ZP6284.C3



ZUCCHETTI
**PAN KITCHEN
MIXER WITH
PULL OUT SPRAY**
BRUSHED NICKEL:
ZP6285.C3



ZUCCHETTI
**PAN SQUARE
SHOWER MIXER**
BRUSHED NICKEL:
ZP6126.C3



OLI
SLIM PUSH PLATE
INOX: OL057141

ARTCERAM
**GHOST
VESSEL
BASIN**
WHITE:
27338.10



BAGNO DESIGN
**URBAN
BTW PAN**
WHITE: BD-14120.WH

BAGNO DESIGN
**URBAN SOFT
CLOSE SEAT**
BD-14117.WH



BAGNO DESIGN
**URBAN WALL
HUNG PAN**
WHITE: BD-14101.WH

BAGNO DESIGN
**URBAN SOFT
CLOSE SEAT**
BD-14117.WH



robertson
design.ideas™

INSIGHT

INTO THE DESIGN OF BEAM & RISE
WHY ZAVEN DESCRIBE DESIGN
AS AN ANALYTICAL PROCESS?

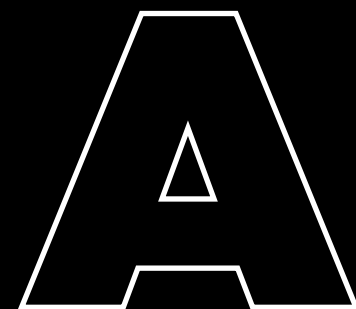


“

WHETHER IT IS AN OBJECT
OF EVERYDAY USE OR A VISUAL
COMMUNICATION PROJECT,
ZAVEN ALWAYS AIMS FOR
FORMAL CLARITY.”

Zaven is a Venice-based design studio founded in 2006 by Enrica Cavarzan and Marco Zavagno. They operate at the crossroads of product design, graphic design, interior design and art direction. For Zaven, design is an analytical process: each project is driven by extensive research taking form in the final product. Whether it is an object of everyday use or a visual communication project, Zaven always aims for formal clarity. The studio has initiated numerous collaborations with creatives from different contexts and holds classes and workshops in various universities, academies and design schools across the world.

WWW.ZAVEN.NET



SHOWROOMS

AUCKLAND

ROBERTSON

25 Vestey Drive, Mt Wellington
Ph: (09) 573 0490

Open Monday to Friday 8.30am - 5pm
Saturday 9am - 1pm
Closed Sunday

KITCHEN THINGS | LUXURY COLLECTION

26 Morrow Street, Newmarket
Ph: (09) 522 8375

Open 7 days 10am - 6pm



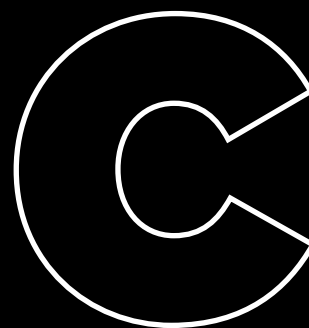
WELLINGTON

ROBERTSON

23 Marion St, Te Aro
Ph: (04) 595 1165

Open Monday to Friday 8.30am - 5pm
Closed Saturday and Sunday

For a bathware consultation please make an appointment by emailing sales@robertson.co.nz



CHRISTCHURCH

HOME IDEAS

37 Mandeville Street Riccarton
Ph: (03) 348 2863

Open Monday to Friday 9am - 5pm
Saturday 10am - 4pm Sunday 11am - 4pm

Request our latest brochures...

Our latest IDEAS brochure is a treasure trove of innovative product and great design, while our GROHE brochure features the finest sanitaryware from the masters of design and technology. Request your FREE copy now!

sales@robertson.co.nz



robertson®
BATHWARE
— SINCE 1987 —

Ph: +64 9 573 0490
Fax: +64 9 573 0495
Email: sales@robertson.co.nz

ROBERTSON.CO.NZ